

Contents

CEO Report	3
About the Foundation	4
Our Place	6
Our Country	14
Our Sector	22
Our Family	24
Financials	26
Grant Summary	30

Board of Directors

Terry Snow Chair and Founder
 Georgina Byron CEO
 Ginette Snow
 Stephen Byron AM
 Craig Betts
 Scarlett Gaffey
 Stephen Gaffey
 Tom Snow
 Andrew Leece
 Louise Walsh

Team

Georgina Byron AM — Chief Executive Officer
 Joanne Fernance — Executive Assistant
 Carolyn Ludovici — Our Place Manager
 Lorraine Johnson — Grants Co-ordinator
 Alex Lagelee Kean — Impact and Engagement Manager
 Lucy McKee — Communications and Marketing Advisor
 Plus the invaluable advice and support from the Airport Group, with a big thanks to Himali Pullaperuma

Advisors - thank you

Vicki Wade – Noongar woman, Aboriginal Cultural Advisor
 Noeletta McKenzie – Lurritja and Yamatji woman, Aboriginal and Torres Strait Islander Engagement Officer (in Darwin)
 Karen Iles - Aboriginal Social Justice Lawyer and Advisor, VioletCo
 Chris Wagner – Public Relations, Talkforce Media
 Kylie Charlton — Australian Impact Investments
 Fiona Higgins — Australian Philanthropic Services
 Clayton Utz
 And others in the community, especially the Take Heart team

The Snow Foundation acknowledges Aboriginal and Torres Strait Islander peoples as the first inhabitants of the nation and the traditional custodians of the lands where we live, learn and work.

Terry Snow AM Chair and Founder



FOUNDATION
ESTABLISHED
1991



ORGANISATIONS
FUNDED
400+



INDIVIDUALS
ASSISTED
420+



TOTAL
GIVING
\$45.9M

Despite another year of disruption and uncertainty brought on by COVID-19 and the subsequent lockdowns, the team at The Snow Foundation kept everything on track and managed to achieve some wonderful outcomes for the communities of Canberra, Sydney and the South Coast.

The most significant achievement for me was the opening of the new wing at Clare Holland House in June. This has been an important and meaningful undertaking, with staff from both the Foundation and the Airport involved with the project, and I was delighted to be present at the opening with other members of my family.

We are also proud to support Sober in the Country and Shanna Whan, the CEO and Founder, a dynamic individual whose efforts were recognised in the 2022 Australian of the Year Awards (Local Hero). Shanna's struggles with alcohol are well documented, and we are delighted to assist in raising awareness of alcohol abuse in rural areas.

Scholarships for students to pursue further education is an important part of the work we do in regional and rural areas. The hope is that these students return to their local towns once they have successfully completed their studies and contribute learned skills and expertise to their communities. Expanding our scholarship program to the Shoalhaven through the Country Education Foundation and our funding through the Foundation for Rural and Regional Renewal in the Ulladulla, Batemans Bay and Nowra regions is key in helping local communities thrive after a few challenging years.

A big thank you to Georgie and her team for raising awareness and tackling the health and inequality issues around rheumatic heart disease. This deadly disease particularly affects children in Indigenous communities. More needs to be done to resource the community-led solutions to this critical health issue in our country.

It will be a highlight for all the family to celebrate our 30th Anniversary and the announcement of Snow Entrepreneurs, and I'm excited to have the opportunity to meet the Entrepreneurs and see what bright and innovative projects they will undertake. It's a great thrill for me to back this initiative.

I hope I get the opportunity to catch up with many of you during the year, to celebrate not only our 30 years of giving, but the efforts of all the organisations and individuals who partner with us to make a difference to the communities in which we live.





Terry Snow and Ginette Snow at the Snow Foundation legacy filming — The Snow Foundation Staff — Jo Fernance, Carolyn Ludovici, Georgina Byron, Lorraine Johnson, Lucy McKee, Alex Lagelee-Kean — Menah McKenzie — Deadly Heart Trek t-shirt artist with Geoffrey 'Jacko' Angeles — One Disease — Country Education Foundation scholarship student Bailey Sassal — Tanya Smith, Bronnie Taylor MP, Georgina Byron, Tracy Spicer and Larissa Behrendt — Good360 donations to Villawood East Primary School — FRRR Ulladulla community workshop — Dr Bo Reményi in NT as part of the Deadly Heart Trek — Vital Signs Canberra launch - Peter Gordon- Hands Across Canberra, Georgina Byron, Dr Justin Barker — Youth Coalition ACT, Dr Emma Campbell — ACTCOSS, Genevieve Jacobs — RiotACT

Georgina Byron AM Chief Executive Officer



Just when we thought the challenges of 2020 were ending, along came 2021. Whilst many organisations we work with were better equipped to respond due to innovating the year prior, they were still stretched to their limit. A huge thank you to our partners for your resilience and continuing to step up and make a difference during these uncertain times.

Prior to this 'second wave' of COVID, we launched into extensive planning for the *Deadly Heart Trek* together with a group of doctors, local health workers, and Aboriginal and Torres Strait Islander leaders and communities. The plan was to tour across Australia to listen, learn, educate, diagnose and treat Indigenous communities affected by rheumatic heart disease. Whilst the national trek was unable to go ahead, the local NT medical team led by Dr Bo Reményi were able to respond and treat ten communities in the Northern Territory, who strongly demanded a visit. We will use the significant learnings from this and hope to complete more of the Trek in 2022. A big thanks to all involved; an amazing deadly team!

Fortunately, some in-person projects were realised, and on a wintery day in June, our family were honoured to be at the opening of the new wing at Clare Holland House in Canberra, enabling more beds, shared spaces and quality end-of-life care. We were also thrilled to launch some research projects with our community foundation friends - the second Vital Signs Canberra Report, in partnership with Hands Across Canberra (HAC), which provides a snapshot of Canberra's strengths and challenges. Sincere thanks to Peter and Lesley of HAC and Carolyn from my team. And as Chair of the Sydney Women's Fund, I was grateful to be part of the release of the fourth Sydney Women's Portrait 2021 research report. Unfortunately, the inequities women face worsened during COVID and sub-conscious bias continues. Please check out Sydney Women's Fund *Women's Work* program (also released in 2021), a valuable digital story resource for everyone. Makes me so glad we are backing Fearless Women in Canberra!

A highlight for me was launching the tick-borne disease research program with mum, Ginette, who has lived experience of this disease. We are backing crucial research by a world-renowned multi-disciplinary team, who plan to provide answers to patients who often suffer for years from debilitating symptoms of tick-borne illness or tick-borne disease.

2021 is the 30th Anniversary of the Foundation and to mark this occasion we created and launched Snow Entrepreneurs - fellowships for social change. These fellowships honour our own entrepreneurial beginnings and our founder Terry Snow. We have a long history of backing up-and-coming entrepreneurs and supporting them to build organisations with deep impact. See the incredible shortlist, who went through a rigorous review, on page 19.

To celebrate this 30-year milestone, we had hoped to bring our community partners together to celebrate with the family – we are aiming for this in 2022 instead. I really look forward to seeing you all again in person, and for you to further connect with our terrific team – Carolyn, Lorraine, Jo, Alex and Lucy – whom I am very grateful to.

On a personal note, after eight years of chairing the Family Foundation Network at Philanthropy Australia, I am delighted to pass the reins to Emily Albert of the Tony Foundation. To the Board and my family: Terry, Ginette, Stephen Byron, Scarlett, Stephen Gaffey, Tom, Craig, Louise and Andrew, I want to thank you for your support this year. And to all the people we work and collaborate with; for-purpose organisations, philanthropists, businesses and government – I thank you in our efforts to create a more caring and inclusive community where everyone can thrive. Please enjoy reading a few highlights of the work we do together in this report.



About Us

Our Pillars



Our Place – The Canberra region is our main place, supporting a variety of local organisations across a range of causes to help address the need, build capacity and connection. In other key regions (NSW South Coast and Sydney) we work with major partners connected to local issues and organisations.



Our Country – Progresses key social justice issues requiring systemic change at a national level, raising awareness of social issues and supporting social entrepreneurs to achieve long-lasting positive change.



Our Sector – Focuses on increasing the capacity and skills of for-purpose organisations and fostering more effective philanthropy.



Our Family – Engages and honours the interests and passions of the family.

Our Purpose

We create opportunities and strengthen resilience for a more caring and inclusive community where everyone can thrive.

Our Approach

We look for innovative and community-led initiatives that empower communities to drive solutions to the problems they're facing.

We are a catalyst for meaningful change, backing inspiring people and organisations and taking considered risks that help bold ideas become reality.

We address gaps and tackle some of the underlying causes that lead to inequality by raising awareness, meeting basic needs and contributing to systemic change.

We foster collaboration and build long-term, trusting and transparent relationships where we listen, learn and enable.

We provide tailored support, offering funding, our voice, advocacy, skills and connections to assist where needed.

Our Values

Humility – we recognise the expertise of our partners and help them achieve great things

Social justice – we uphold principles of equity, inclusiveness and fairness

Commitment – we are here for the long term and understand social change takes time

Collaboration – we are engaged with our partners and our community and work together supportively

Empathy – we strive to understand and share the feelings of others

Transparency – we share our learnings and promote shared intelligence

Our Focus

Education and Employment – employment, life skills, scholarships, awareness of social issues

Economic Justice and Safety – homelessness, domestic violence

Health – Indigenous health, end-of-life care, addiction, disability, youth mental health prevention

Philanthropy and For-Purpose Sector – capacity building and effectiveness

Grant Funding 2020/21

Total Giving
\$7.3M

Our Place
\$3.3M

Our Country
\$2.2M

Our Sector
\$265K

Our Family
\$1.4M

Individuals
\$111K

Geographic Distribution of Grants



Number of Grants 2020/21

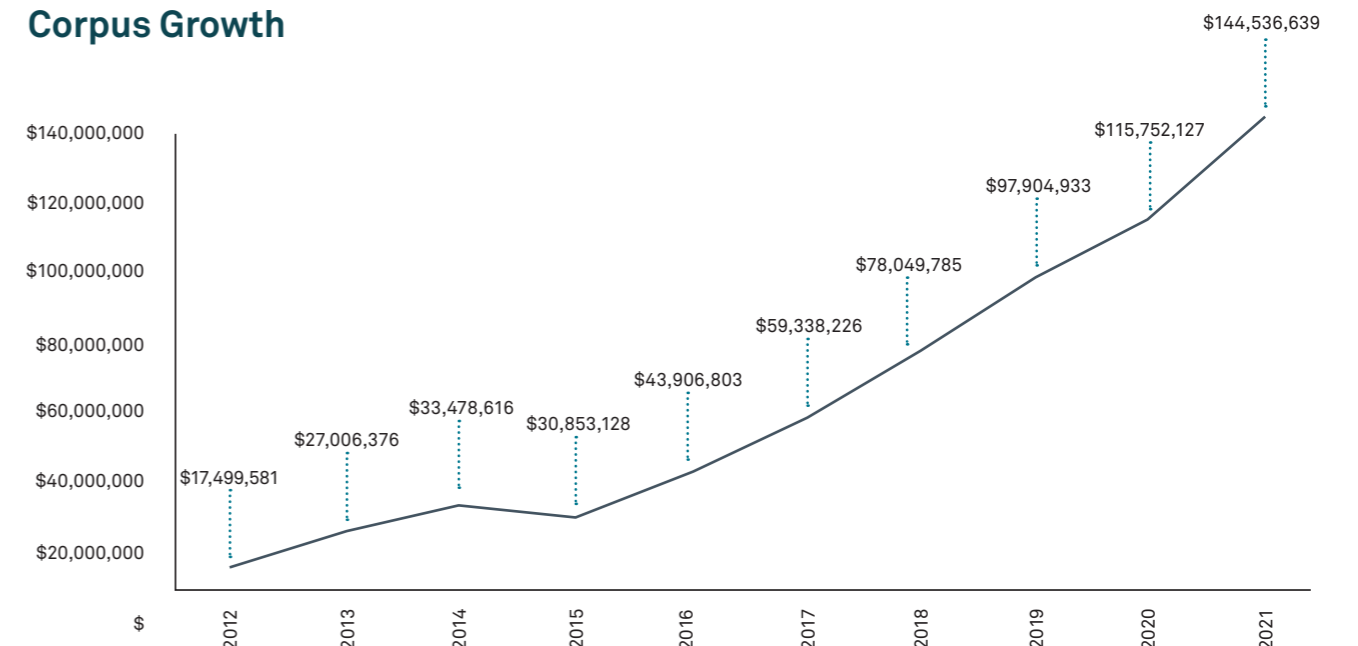
Organisations
126

Individuals
58



*55 Canberra and 9 Key Regions

Corpus Growth



Our Place Canberra and Key Regions

The Canberra region is our main place. We are part of the fabric of the community, and we want to see all aspects thrive. We foster long-term partnerships across a range of social causes with a deeper focus on youth homelessness and domestic violence. Each year we offer a grant round to the Canberra region, responding to the needs of the community. Our key regions include the NSW South Coast and Sydney, where we work closely with two major partners plus a few small ones connected to local issues and organisations.

Our Place
\$3.3M

Canberra
\$2.2M

Key Regions
\$1.1M

Focus Areas – Canberra

Education and Employment

Scholarships, employment,
life-skills

\$302K

Economic Justice and Safety

Homelessness, domestic violence

\$484K

Health

End-of-life care, disability

\$1.4M

Clare Holland House

End-of-Life Care



“We have really enjoyed being part of this significant project from the very beginning, as members on the steering committee and project control group. We have a deep commitment to Canberra and this is one of the largest donations in our 30 years.”

— Terry Snow at the opening of the Clare Holland House extension



Guests at the opening of the Clare Holland House extension



Paul House and Terry Snow at the opening of Clare Holland House

The new wing of Clare Holland House was officially opened in June. The expansion project provides an additional eight palliative care in-patient beds, accommodating a further 250 patients a year. A community fundraiser also contributed funds to assist with extra furnishings, landscaping and gardens, to create an extra special home for patients and their friends and family.

**2 YEARS
TO 2021
\$2M**
Capital costs



Project Independence

Disability

After delays due to COVID, the third Project Independence property in Phillip has commenced construction. This property will enable 10 people with intellectual disability to own their home, using their disability support pension. Project Independence is also expanding to Melbourne, with a new property purchased. Our main support is for Phillip and extends to providing funding for operational costs.

**8 YEARS
TO 2023
\$806K**

Capital costs
and operations

Tender Funerals Canberra Region

End-of-Life Care

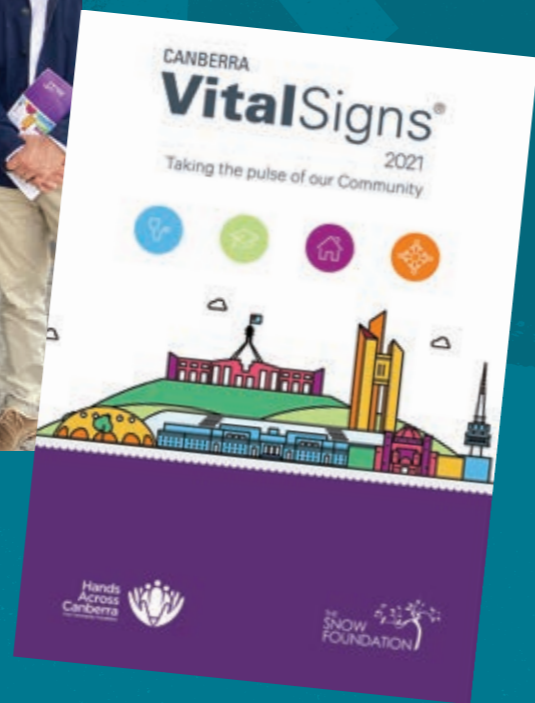
Tender Funerals is a community-led funeral service that offers meaningful, affordable and culturally appropriate funerals to support healthy bereavement and community connection. First established in the Illawarra area, Tender Funerals is in the process of setting up in the Canberra region and have the support of Social Ventures Australia and The Snow Foundation. Phase one of our grant has provided seed funding to scope community interest and potential site options and phase two will assist with the fit-out.



**2 YEARS
TO 2021
\$290K**
Salary and
capital costs



Carolyn Ludovici – The Snow Foundation, Lesley Daw – Hands Across Canberra, Peter Gordon – Hands Across Canberra, Georgina Byron – The Snow Foundation, Dr Emma Campbell – ACTCOSS, Dr Justin Barker – Youth Coalition ACT at the Vital Signs 2021 media launch



Vital Signs

Community Research

In partnership with Hands Across Canberra, we released the second Canberra Vital Signs Report. The report is a community-led research initiative that provides a unique insight into the Canberra community, identifying strengths and challenges. Despite the ACT having the highest average weekly earnings in Australia, two out of five Canberrans living in poverty are in wage-earning households.

Canberra is one of the most expensive cities in Australia to rent, with high rates of rental stress for low-income earners, limited rental vacancies, and a median house price reaching \$1M. The report wasn't all doom and gloom: Canberra has low unemployment, a high level of education, a strong commitment to donating and volunteering, and a sense of belonging across the community.

We are very grateful for the expertise of many individuals and organisations that participated in developing the report and we look forward to working with the community to focus our attention on the areas of need.



Georgina Byron speaks to the media at the Vital Signs launch



Mower Shed Southside

Employment Pathways for Disengaged Youth

Initiated by Uniting Care Kippax, a second branch of the social enterprise Mower Shed has been launched and will be managed by Canberra PCYC. Mower Shed provides a professional lawn and gardening service along with job-readiness training, mentoring and employment for young people.

This joint venture between two of our partners is proof of the power in for-purpose collaboration and the role philanthropy can play in connecting and supporting people with the same goals. Hands Across Canberra were also involved, with matched funds and support.

Mower Shed on the southside



Ruby's Place

Youth Homelessness

Homelessness for children and young people under the age of 16 has been identified as a significant problem in the ACT. There are currently no residential services for this group, which often leads to staying in harmful or unsafe environments.

Ruby's Place is a proven reunification program from South Australia that focuses on keeping families together and young people from being homeless. A joint initiative between Rotary, ACT Youth Coalition and the ACT Government has brought this model to Canberra to support vulnerable youth aged between 12 and 16. Our funding assisted with refurbishment, landscaping and furnishing of the house. Ruby's is scheduled to open mid-2022.

**3 YEARS
TO 2023
\$95K**

Renovations



Lachie and Lisa from CREATE Foundation

CREATE Foundation

Out-of-Home Care

The CREATE Your Future program was designed in consultation with young people aged 15 – 25 years, to meet their needs when transitioning from the out-of-home care system to independence. Almost 30% of young people leaving out-of-home care become homeless within the first 12 months. Our funding enables a series of life skills workshops covering financial management, housing, relationships and job readiness. We also support the Sibling Connections program, which runs activities to maintain sibling relationships when they are in separate placements.

**6 YEARS
TO 2023
\$137K**

Program support

The Farm

Addiction

The Farm in Galong was established to support women recovering from alcohol and other drug misuse. Among the achievements of the past 12 months is accreditation and improvements to the grounds, which are maintained by the women, including a greenhouse and a flow hive for bees. The women have also developed a beautiful cookbook full of traditional recipes.

“Being at The Farm has given me many opportunities to transform myself; changes I wouldn’t have thought were possible. I have almost completed my Certificate III in Health Administration and have completed several parenting courses. The main change is that with the help of The Farm I can have overnight and weekend visits from my beautiful children”.

— Client testimony

**4 YEARS
TO 2022
\$306K**

Renovations and
core funding



The Farm workshop

Fearless Women

Young Women

Young women in the ACT experience higher levels of psychological distress than in any other area of Australia. Fearless Women is based on the successful Menslink model for young men and will provide an outreach and support service dedicated to girls and young women, aged 12 to 25. Commencing in early 2022 with free counselling, mentoring and education programs, Fearless Women will foster a sense of belonging and strength in girls and young women that will empower them to find their way.

**3 YEARS
TO 2024
\$150K**

Core funding

Fearless women board members and supporters



Domestic Violence Support for Individuals

Domestic and Family Violence

We provide funding to enable YWCA Canberra to support women and their families impacted by domestic and family violence to meet their immediate needs, including e-vouchers for essential items, relocation and removalists costs and payment of utility and phone bills. A total of 89 women and their families accessed the support between July and October.

This complements The Snow Foundation’s giving program to individuals, which assists with basic needs and relief. In 2021 we provided 58 individual grants, with the majority of applications from women’s refuges on behalf of women escaping domestic violence.

Men’s Table

Mental Health

The first Canberra Men’s Table formed amidst the uncertainty of COVID lockdowns, experimenting with various venues to find a suitable ‘home’. A core group of men are now meeting monthly to support each other and share their highs and lows.

This grant contributed to establishing in Canberra and a road-trip that saw the launch of Tables in Bodalla and Albury, and emerging Tables in Nowra and Cobargo. A range of strategic relationships with local agencies and their networks have been formed and this will enable further outreach to new men in 2022 and beyond.



Men’s Table

YWCA Community Bus

Community

Thirteen years ago, we presented YWCA Canberra with a bus to assist with transport needs for a range of community groups in the Tuggeranong area. In 2021, we purchased a new bus from Lennock Volkswagen Phillip as a replacement. The bus helps many community groups with pick-ups, drop-offs and excursions.

Delivery of the new YWCA bus



The Neighbourhood Canberra

Community

Canberra could be home to a world-first village designed specifically for people with dementia. The Neighbourhood’s vision is to offer 24-hour care for people living with dementia, in a multi-generational residential environment that integrates with the local community. It will include 15 cottages, a cafe, supermarket, library, cinema and hairdresser. A partnership with the University of Canberra will provide expert input on all stages of the development, from design to service delivery. They are currently scoping for a site in Canberra. We provided small grants to help establish the project plan, concept designs, website, equipment and staffing costs.

**2 YEARS
TO 2022
\$40K**

Core funding

We support the Key Regions of the NSW South Coast and Sydney and work closely with major partners connected to local issues. On the NSW South Coast, we partner with the Foundation for Rural and Regional Renewal and in Sydney with the Sydney Community Foundation and Sydney Women's Fund. We also have two key partners providing scholarships for students in the regional areas surrounding Canberra and the NSW South Coast.

SYDNEY
Sydney Women's Fund
Women and Families

In 2021 Sydney Women's Fund delivered two significant projects that offer opportunities to educate and create awareness on gender equity and promote the independence and safety of women and girls in Sydney:

- Women's Work – a ground-breaking educational program and four-part documentary to help women gain greater financial independence and security. It's designed to get women thinking about how subconscious bias can have a major impact on financial security, and what they can do about it.
- The fourth 'Portrait of Sydney Women 2021 Research' provides a valuable snapshot of Sydney women young and old and informs how Sydney can rethink city life post-pandemic.

Sydney Women's Fund were in constant contact with community leaders and organisations during the lockdowns and provided quick response funding to Western Sydney. We supported this crucial assistance through Liverpool Neighbourhood Connections, Community Support Services Bankstown and Our Community Pantry Bargo, providing food parcels and IT assistance.

To end a busy year, a new campaign, 'Be Kind Sydney - Day of Giving' was launched on World Kindness Day in November and encouraged Sydney-siders to generously give where they live. Over \$352k was raised to support the work of many charities assisting families across Sydney doing it tough.

14 YEARS TO 2024
\$1.36M
Core funding and local grants



Above - Liverpool Neighbourhood Connections Covid Food Relief 2021

Right - Sydney Women's Fund Portrait of Sydney Women Research launch - Georgina Byron, Mona Mahamed, Angelica Ojinnaker, Professor Nareen Young, Sophie McCarthy, Jane Jose and Joanna Ryan



FRRR Nowra workshop



FRRR Clyde River Museum Volunteers

NSW SOUTH COAST & REGIONAL
Foundation for Rural and Regional Renewal
Community

In partnership with Foundation for Rural and Regional Renewal a further \$375k was awarded in grants to support 19 projects in the South Coast communities of Batemans Bay, Ulladulla and Nowra. This follows the 18 start-up grants awarded in 2020 and is the second stage of a 5-year plan providing \$2.5M to strengthen for-purpose organisations through the *Investing in Rural Community Futures* program.

This grassroots approach is aimed at building and supporting the capacity of individual not-for-profits in each community, recognising the collective impact on community well-being.

At the core of the program is a community roadmap that has been developed by the community's not-for-profits to articulate their goals and vision for their community. Investment then supports these goals through grants and ongoing evaluation of the community roadmap.

5 YEARS TO 2024
\$2.5M
Core funding and local grants



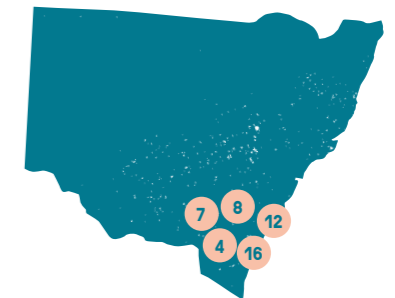
Royal Agricultural Society Foundation scholarship student Lily Morris

Scholarships

Through our two major scholarship partners, Country Education Foundation and Royal Agricultural Society Foundation, we support rural and regional youth to access education, achieve their goals and realise their dreams. Students are awarded scholarships across a range of courses from advanced medical science to community service. The funds assist with fees and expenses such as travel, internet connection and laptops.

We also provide scholarships to Queanbeyan High School for senior students, Companion House for students from refugee backgrounds and Pinnacle Foundation, assisting LGBTIQ+ students.

\$242K FOR 47 SCHOLARSHIPS IN 2021



8 CANBERRA
16 SOUTHERN TABLELANDS
4 SNOWY-MONARO
12 SHOALHAVEN
7 SOUTH WEST SLOPES

Our Country

Our Country's focus is to support a few key social justice issues requiring systemic change, use our voice as advocates, help raise awareness of social causes and support inspirational social entrepreneurs and community innovators to achieve long-lasting positive change.

Our Country
\$2.2M

Social Justice Issues
\$1.2M

Social Entrepreneurs
\$900K

Awareness of Social Issues
\$140K

Focus Areas
Health
\$1.4M

Education and Employment
\$580K

Economic Justice and Safety
\$205K

Social Justice Issues

Indigenous Health

Since 2011, we have been working with Aboriginal and Torres Strait Islander communities and other significant stakeholders and partners on rheumatic heart disease and crusted scabies to help bring an end to these preventable diseases that can lead to death.

Rheumatic Heart Disease (RHD)

RHD starts with a sore throat or skin sore, caused by Strep A bacteria and if untreated can lead to heart failure, disability and death. Treatment requires penicillin injections taken every month on time, for about 10+ years. In severe cases, open-heart surgery is needed.

We continue to focus on supporting community-led solutions and bringing RHD to public attention.

**9 YEARS
TO 2024
\$1.8M**

Advocacy, Awareness,
Education and
Research

Dr Bo Reményi giving an echo heart scan in the NT



Community Action – The Deadly Heart Trek

In early 2021, we began a major project with a multi-disciplinary team of doctors, local health workers and Aboriginal leaders called The Deadly Heart Trek to end RHD. As an experienced group working alongside communities for decades, the Trek's purpose is to travel across Australia to listen, learn, educate, diagnose and treat Aboriginal and Torres Strait Islander communities affected by RHD. This project had extensive layers of consultation with communities, Traditional Owners and local Land Councils and is a community-led and community-based program. We aim to empower Aboriginal leadership and self-determination and demonstrate that communities want action and support.

The Trek was to embark in July 2021, visiting 15-20 communities in QLD, NT, SA and WA. Then COVID-19 took hold and we put the National Trek on pause. Fortunately, a number of communities in the NT still benefited; two delivery teams under the leadership of Dr Bo Reményi responded to ten communities who were very eager for access to medical support - specifically diagnosis, treatment and education. We have solid learnings which we will share and use going forward.

We look forward to supporting community-led action to fight this debilitating disease.

deadlyhearttrek.org

RHD Medical Research

We have another three-year commitment to fund the development of a Streptococcal A vaccine to prevent RHD with Professor Michael Good AO, a National Health and Medical Research Council Senior Principal Fellow at Griffith University.

Partnerships and Stakeholders

We thank our partners: Communities in the Top End and Barkley Regions NT, Vicki Wade, Noletta McKenzie, Dr Bo Reményi, Dr Rob Justo, Dr Ben Reeves, Dr Josh Francis, Dr Gavin Wheaton, Dr Jim Ramsay, Alex Kaethner, Karen Iles, Mike Hill and the Take Heart team, Catherine Halkon, Nancia Guivarra, END RHD, RHD Control Programs, NACCHO, RHDAustralia, NT Cardiac, One Disease, Orange Sky, Mala'la Health Service, BUPA, Telethon Kids, Menzies, Heart Foundation, HeartKids, Close The Gap, local and national Aboriginal and Torres Strait Islander leaders, and philanthropy (Aspen Foundation, CAGES, Oranges and Sardines).



Left - Patient receiving echo heart scan

Below - Alex Kaethner - Cardiac Sonographer with NT Cardiac and child



Awareness and Advocacy

The sequel to the 2015 *Take Heart* documentary film and advocacy project, *Take Heart: Deadly Heart* will be released in 2022. It focusses on sustainable solutions to prevent RHD and reduce new cases to zero by 2030. We are thrilled to be the major sponsor with Aspen Foundation, and grateful to the Moonshine team for persevering despite travel and access challenges.



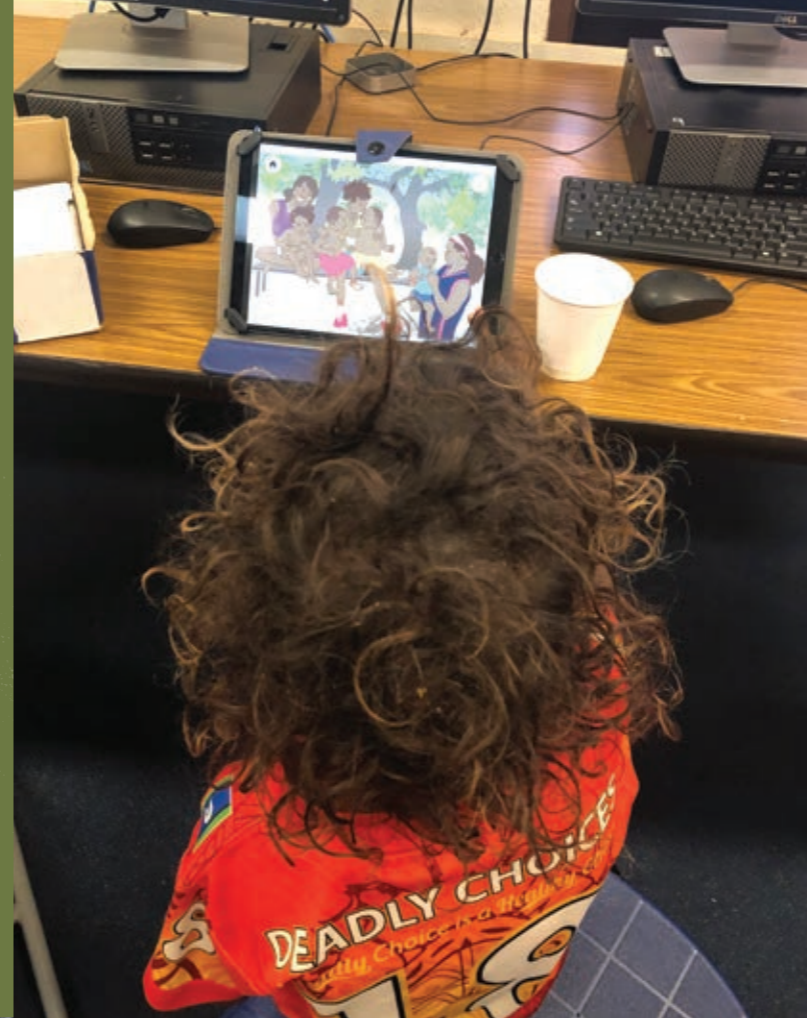
Healthy Hygiene – Orange Sky

Four years ago we provided seed funding for Orange Sky to establish a remote service van in the community of Maningrida, NT - now considered the 'gold standard' of community-led operations. Following this success in Maningrida, Orange Sky embarked on a Remote Venture in 2021, to visit as many communities as possible to connect and learn. They are committed to working alongside communities before establishing a new service to ensure they can provide a holistic and locally-relevant service.

Nine potential areas were identified for remote services and they set up in Wadeye (NT), Fitzroy Crossing and Bidadanga (WA) at the end of 2021, adding to the three existing services in Lockhart River, Palm Island and Maningrida.

With improved access to regular laundry facilities to wash and dry clothes, linen and bedding, an Orange Sky service may contribute to improved health outcomes. The mobile facility may also act as a community hub for social connection, sharing of information, health screening, promotion and education programs.

A resident and her children with Orange Sky's Judith Meiklejohn (Program Manager remote services) and Richard Cassidy (Cultural Navigator), yarning and connecting while the washing is being done



Young person from the Katherine region looking at One Disease's Storytelling Tool on Scabies and Crusted Scabies

Crusted Scabies – One Disease

One Disease's mission is to eliminate Crusted Scabies as a public health concern from Australia by the end of 2022 - they are now close to achieving this ambitious goal.

Elimination requires a recurrence rate of less than 5% - now continuously being achieved. Very few people who have been treated for Crusted Scabies are developing the disease a second time.

Crusted Scabies predominantly affects Indigenous Australians living in remote communities of the Northern Territory. It is a highly infectious and incapacitating disease, which develops from untreated scabies in people who have compromised immune systems due to existing chronic illnesses.

In 2021, One Disease pivoted their model to provide education sessions remotely and to support the One Disease workers in remote communities.

**11 YEARS
TO 2022
\$2.25M**

Scabies Elimination Program

Indigenous Rights

Uluru Statement from the Heart

We continue to support the Uluru Statement from the Heart, advocating for a First Nations Voice protected in the Australian Constitution. How wonderful that the leaders of this ongoing campaign, Professor Megan Davis, Aunty Pat Anderson AO and Noel Pearson, were awarded Australia's only international prize for peace – the Sydney Peace Prize – in May 2021!

It is heartening to see that almost 90% of the 4000+ submissions to the government-run Indigenous Voice Co-Design called for the Voice to be enshrined in the Constitution, and a recent Insentia poll indicates that 58% of the Australian population would vote "yes" in a referendum, 30% are undecided, and only 12% would vote "no."

Education and engagement are needed among communities and politicians, so we are pleased to support both Professor Megan Davis and her team at the Indigenous Law Centre at UNSW and Dean Parkin and his team at From the Heart to do just that.

**3 YEARS
TO 2021
\$155K**



Sydney Peace Prize winners Professor Megan Davis, Aunty Pat Anderson AO and Noel Pearson

LGBTIQ+ Rights

Equality Australia

Equality Australia continues its vital advocacy of LGBTIQ+ rights across the country. System change takes time, so we're pleased to continue to support core costs.

Key wins in 2021:

- The Victorian Government passed major reforms to provide better protection for LGBTIQ+ people from discrimination by religious organisations and committed to ending unnecessary medical procedures on young intersex people without their consent.
- Over 30,000 people have supported the inclusion of LGBTIQ+ questions in the next Census.

Ongoing challenges include the Federal Religious Discrimination Bill which threatens anti-discrimination progress.

**4 YEARS
TO 2022
\$1.6M**

Core funding

Matthew Phillips (Equality Australia), Ghassan Kassissieh (Equality Australia), Anna Brown (Equality Australia), Revd. Dr Jo Inkpin (Pitt Street Uniting) during advocacy against the federal Religious Discrimination Bill



Raising Awareness of Social Issues

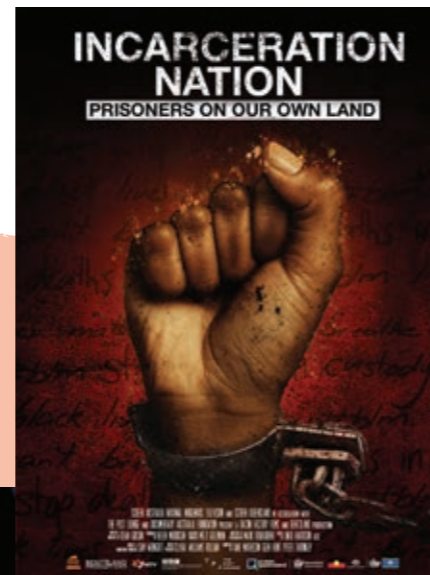
Documentaries

Incarceration Nation – A must-see documentary and impact campaign #RaiseYourVoice, about the overrepresentation of Indigenous people, including children as young as 10, in Australia's prisons. It investigates the complex disadvantages and injustices that First Nations people are facing. The film was screened on NITV, SBS and at the Sydney Film Festival, receiving extensive media coverage. Incarceration Nation is one of three finalists shortlisted for the 2021 Walkley Documentary Award.

Unbreakable – A film about Jelena Dokic and the bigger issue of violence and coercion in sports. We look forward to a release in 2022!

Firestarter – Last year's incredible film about the history of Bangarra Dance Theatre has won the Rose d'Or, the Australian Director's Guild Award for Best Documentary and has been nominated for the Screen Producers Australia award, the Australian Editors Guild Award and the 2021 Walkley Documentary Award.

Dreamlife of Georgie Stone – follows transgender Georgie Stone as she reflects on her defining moments in life and emerging into adulthood. To be released in 2022.



Right - Incarceration Nation
Below - Dreamlife of Georgie Stone



Economic Justice

ACOSS: Raise the Rate

Raise the Rate for Good continues. The temporary coronavirus supplement in the first year of the pandemic showed the benefits of lifting social security payments. However, the supplement reduced and then ended in late 2020.

Pleasingly, in early 2021, the Federal Government agreed to a small increase to social security payments of \$25 per week, representing a total additional \$2.5bn in the budget. However, at \$44 per day, people on Jobseeker continue to live well below the poverty line (\$65 per day).

The Shortlist

4 Voices Global

Jo Westh: Mobile van to help vulnerable women connect, learn skills and access support

Australian Spatial Analytics

Geoffrey Smith: Training and employment for people with autism in high-end data jobs

Clean Slate Clinic

Pia Clinton-Tarestad: Telehealth alcohol rehab program in your own home

Confit Pathways

Joe Kwon: Lived experience mentoring and fitness for young people in juvenile justice

Deadly Connections

Keenan Mundine and Carly Stanley: Community-led programs to break the cycle of disadvantage for First Nations people

Head Start Homes

Stephen Woodlands: Enabling people in social housing to buy their own home

Kindship

Summer Petrosius: Social networking and peer support app for parents of children with a disability

More Good Days

Neala Fulia: Online program using neuroscience and psychology to manage chronic pain

Performl

Loki Ball: Affordable data tools and analytics to increase the effectiveness of for-purpose organisations

Ripple

Tim Middlemiss and Skye Riggs: Meaningful careers and civic engagement for young people

The Warrior Woman Foundation

Jessica Brown: Mentoring for young women leaving out-of-home care

Transforming Justice Australia

Thea Deakin-Greenwood: Restorative justice framework for young people who have experienced sexual abuse and their perpetrators

Snow Entrepreneurs fellowships for social change

In 2021, we launched the inaugural Snow Entrepreneurs fellowships for social change, in celebration of the Foundation's 30-year anniversary. These inaugural fellowships honour our entrepreneurial beginnings and those of our founder Terry Snow. They reflect our strong commitment to backing inspiring leaders and teams with innovative ideas to address social problems.

The fellowships will provide funding and wrap-around support coordinated by the Social Impact Hub. Our intention is to build long-term, trusting partnerships to help bold ideas become reality.

We had an overwhelming response and from 145 expressions of interest, we invited 30 to full application stage. The shortlist is included to the right, and the successful candidates will be announced in March 2022.

**\$1M
FIRST YEAR
COMMITMENT**

+ Wrap around support



Good360

Economic Justice

Good360 has weathered another turbulent year, with increased demand for brand-new, unused goods in communities affected by COVID, floods and bushfires. They connected affected communities with millions of PPE, masks, hand sanitiser and everyday essential items.

Good360 is now supporting over 3,000 charities, having matched \$209M worth of donated goods to communities since 2016. They play a critical connecting role in our country's disaster recovery and community capacity. It's amazing to have been part of Good360's journey from the very beginning, and we are thrilled to see tighter partnerships with industry leaders and engaging conversations with Government. We've made a final three-year commitment, bringing our partnership to 10 years.



Good360 Australia's Founder and CEO Allison Covington with the #DoGoodBetter team

**10 YEARS
TO 2024**
\$1.43M

Core funding



WHO ARE THE SISTERS?

- 35%** of women were in casual or unstable employment when they came to Global Sisters
- 29%** are refugees or migrants
- 28%** live in rural and regional areas
- 33%** of new Sisters joining in 2020 were over 50
- 11%** live with a disability
- 17%** are solo parents
- 2%** are Indigenous



Global Sisters

Women & Work

Global Sisters has a growing community of over 5,000 women since its official launch in 2015. These women are supported in their business journeys through education, mentoring, an online marketplace, and access to micro-finance and micro-insurance products - enabling almost 900 women to generate an income. 'Sister Pitch', a new initiative this year, saw 30 top-level CEOs matched with 30 sisters, resulting in a huge boost in confidence, advice and connections.

The pandemic has elevated the importance of micro-business as a powerful alternative for women to precarious employment and it plays a critical part in our economic recovery. Global Sisters continue to advocate for increased investment and support from Government, business and philanthropy.

We have supported CEO Mandy since the very early days and are confident Global Sisters will continue to grow its thriving community of women.

**12 YEARS
TO 2024**
\$1.2M

Core funding

The Violet Initiative

End-of-life care

The Violet Initiative is on a mission to help people talk about and prepare for the end of life. In the last two years, it has supported 7,000+ people with online information, tailored support from a guide and workforce training. Partnerships with aged care organisations (e.g. HammondCare and Clare Holland House), finance and insurance providers (e.g. Westpac and Bupa), and funeral providers (e.g. InvoCare) ensure staff are able to refer customers in need to Violet for further support.

"I knew what to expect and what conversations to have ... being able to make the most of the precious time I had left with Mum and being with her until the end."

— Carer supported by Violet guide

**11 YEARS
TO 2023**
\$1.21M

Core funding

End-of-life support through The Violet Initiative



Uplifting Australia

Youth Mental Health Prevention

In 2021, Uplifting Australia reached a huge impact milestone. They gifted their family mental health program FamilyConnect.org.au to Relationships Australia, the leading provider of relationship support services for individuals, families and communities. This means more than 200,000 families have instant access to the program.

The program offers practical modules for families to strengthen connections and improve resilience in children, gaining great traction, especially during COVID. We extend our gratitude to Founder Garry Thomson, who approached Relationships Australia in 2020. The two organisations worked harmoniously together with the goal to reach even more families. Collaboration at its best!

**7 YEARS
TO 2022**
\$360K

Core funding



Sober in the Country

Addiction

Sober in the Country continues its campaign to change the drinking culture in the bush – supporting those who want or need to cut back or stop drinking alcohol altogether.

Despite losing funding from cancelled events and speaking fees due to COVID, the Bush Tribe community of 400+ continues to grow, and many agricultural and pastoral companies are coming on board to spread the message that "it's okay to say no" to a drink.

Congratulations to CEO Shanna Whan, who was awarded Local Hero for NSW and is in the running for Australian of the Year Local Hero.

**3 YEARS
TO 2022**
\$315K

Core funding

Sober in the Country Founder Shanna Whan and Naomi Smith enjoying a life of sobriety

Our Sector

Our Sector pillar focuses on strengthening the philanthropic and for-purpose sectors. We are committed to fostering more effective philanthropy, expanding community giving and increasing the capacity and skills of for-purpose organisations. We take part in collaborative initiatives and fund key research that will benefit us all.

Effective Philanthropy

The Funding Network

Despite COVID challenges, The Funding Network raised an incredible \$1.1m through online and in-person events. Projects we have supported:

- Social Enterprise virtual event in November, raising \$258,111 for Green Fox Studio, WomenCAN and Hotel Etico
- Giving Heroes launching in 2022 will connect young people with causes they are passionate about and empower them to become changemakers



The three social entrepreneurs pitching at the virtual event: Andrea Comastri from Hotel Etico, Kelly Willmott and Amanda Shepherd from Green Fox Studio and Mikaela Stafrace from WomenCAN Australia

Mannifera

We continue to be an active member of Mannifera, a collective of 18 philanthropic funders who support fairness in political participation, public debate, government and economy. We provide core funding to Mannifera as well as grant funding. In 2021, a total of 16 organisations were funded, including First Australians Capital, Outback Academy Australia, The Australia Institute and Justice Connect, among others.



Philanthropy Australia

We enjoy supporting Philanthropy Australia's vital advocacy work. In 2021, they helped to ensure that charities can continue to advocate without losing tax-deductible gift recipient status, participated in the #FixFundraising Coalition for a national fundraising framework and opposed the draft public ancillary fund guidelines.

In December 2021, after eight years of chairing the Family Foundation Network, Georgina Byron handed over the reins to Emily Albert of the Tony Foundation.



Georgina Byron hands over the Chair of the Family Foundation Network. Emily Albert - The Tony Foundation, Georgina Byron and daughter Gabi Betts, Ann Johnson – Chair Philanthropy Australia

For-Purpose Capacity & Community Giving

Community Foundations

Our partnerships with Hands Across Canberra, Sydney Community Foundation / Sydney Women's Fund and the Foundation for Rural and Regional Renewal continue, providing funds and working closely to strengthen the communities and grassroots organisations in the places where we live and work: Canberra, Sydney and the NSW South Coast.

Social Enterprise National Strategy

We have committed a further two years of funding to the 'Activation Phase' of the Social Enterprise National Strategy to boost Australia's social enterprise sector. This next phase will establish infrastructure to bring the sector together nationally, develop a plan to engage government and build a national strategy and investment case.

Palliative Care Research

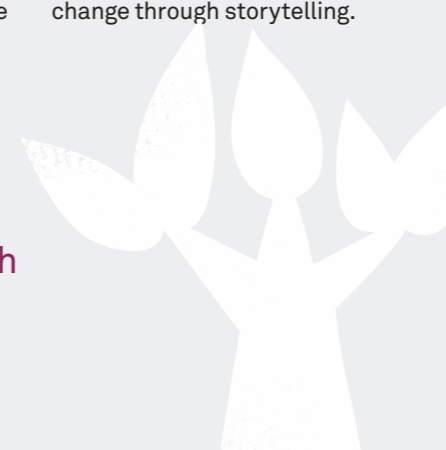
We contributed to a KPMG report: Information gaps in Australia's palliative care, released in June.

Together 4 Youth Collective

The Together 4 Youth Collective is a coalition of 14 organisations led by the Raise Foundation, developing a model for collaboration to enable young people in high school to thrive – socially, emotionally and academically. The model will provide wrap-around support across all age groups and issue areas, ensuring continuity of care for the young people as well as ease of implementation for schools.

Documentary Australia Foundation

We renewed our support with a three-year commitment to core funding, to continue work in creating positive change through storytelling.



Social Ventures Australia

We are pleased to support the fifth *Partners in Recovery* report by Social Ventures Australia and the Centre for Social Impact.

Social Impact Hub: Reimagine Impact

The second Reimagine Impact online program saw 16 for-purpose organisations, including Snow Foundation partners Getaboutable and Better Renting, learn the principles of human-centred design and apply them to real-life challenges.

Reimagine Impact online program session



The Mill House Ventures

The Mill House Ventures offers programs for social enterprises in Canberra and the surrounding region. In 2021, they supported eight ventures across two flagship programs, the Mill House Social Enterprise Accelerator GRIST and the Incubator REFINE - designed to explore trading models to sustain and accelerate measurable impact.

2021 Social Enterprise Accelerator Program ventures included Right To Work, The Horse Rug Whisperer, Bean Central, Ability.News, Next Level Inclusion, Simply Homeschool and Chamaeleon Collective

Our Family

Our Family supports inspired giving. We aim to engage the whole family, honour individual passions and foster philanthropic values. In 2021, we completed the legacy film of founder Terry, wife Ginette and family, and produced a coffee table book to celebrate the Foundation's 30 Year Anniversary. Here are a few of the grants supported by family members.

Tick-Borne Disease Research Program

In June we held the soft launch of the Tick-Borne Disease Research Program in partnership with the NORTH Foundation. Patients, families and medicos came to support and learn about this program, which is so important to our family with lived experience of the disease. We are thrilled to support a world-renowned multidisciplinary team and back crucial research into better understanding the source of infection, diagnosis and treatment pathways for patients suffering with potential tick-borne diseases.

There are limited diagnostic tests available in Australia, which means that potential tick-borne disease is often not recognised or misdiagnosed. The research team will be undertaking a significant and first-of-its-kind clinical research program which places patients at the centre of the study.

“The lack of validated diagnostic testing in Australia leaves patients with tick-borne illnesses confused and lost in a system that ignores them. It is for this reason that my family and I, through the Snow Foundation, have chosen to support this research.”

— *Ginette Snow*



Left – Audience at the soft launch of the Tick-Borne Disease Research Program

Below – Professor Gilles Guillemain, Dr Richard Schloeffel, Georgina Byron, Ginette Snow, and Dr Bernie Hudson



The Top Blokes mentoring program builds social connectedness to improve the mental health of young men

Top Blokes Foundation

The Top Blokes Foundation works with young men to support their health and wellbeing. They focus on increasing resilience, empathy and respect for self and others, and in doing so, work to reduce the rates of suicide, mental health issues, antisocial and risk-taking behaviours.

“I came to Top Blokes to talk about some personal stuff that I don't talk about, but I can really talk to the boys and I connect with them. I feel like a better person and relieved. I've spoken about things that I haven't spoken about in ages, the weight is lifted off me now.”

— *Michael, Building Blokes Participant*



Studio A artist Meagan Pelham at the Art Gallery of New South Wales for the installation of Studio A mural 'Love owls and mermaids singing in the rainbow pop'

Studio A

Studio A offers professional development pathways and opportunities for artists living with an intellectual disability. They provide the artists with a working studio space in Sydney, manage an exhibition program and facilitate workshops with contemporary artists.

Motor Neuron Disease

In 2021, our eleven-year funding commitment to the Centre for MND Research, Macquarie University reached \$2M. Led by Dr Angela Laird and Dr Marco Morsch, the teams have generated a zebrafish platform that allows them to focus on understanding the causes of MND and test potential therapeutics.

The facility now supports 20 research staff, 19 students and 8,000 zebrafish, and many other researchers tap into its capabilities. They are the key national collaborator for MND zebrafish research in Australia, with 20 active collaborations (nationally and internationally) and have published over 40 papers, making a strong contribution towards MND and neurodegenerative research.



Roundabout Canberra volunteers sorting donations: Helen Bilston, Tracey Malone and Tess McDonald

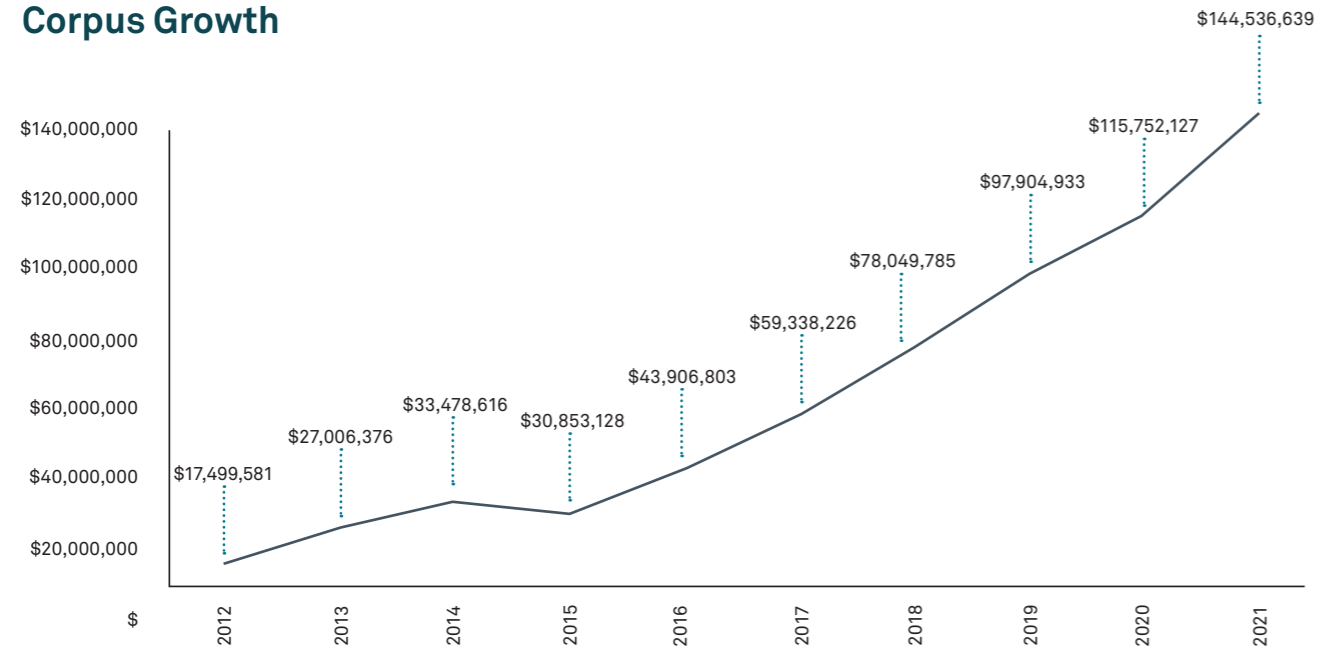
Roundabout Canberra

Roundabout Canberra accepts donations of essential items for newborn babies right up to children aged 16 years. Their team of 200 volunteers sort, clean and create beautiful gift packs of these items to empower and support vulnerable families in the Capital Region, through over 90 social services organisations.

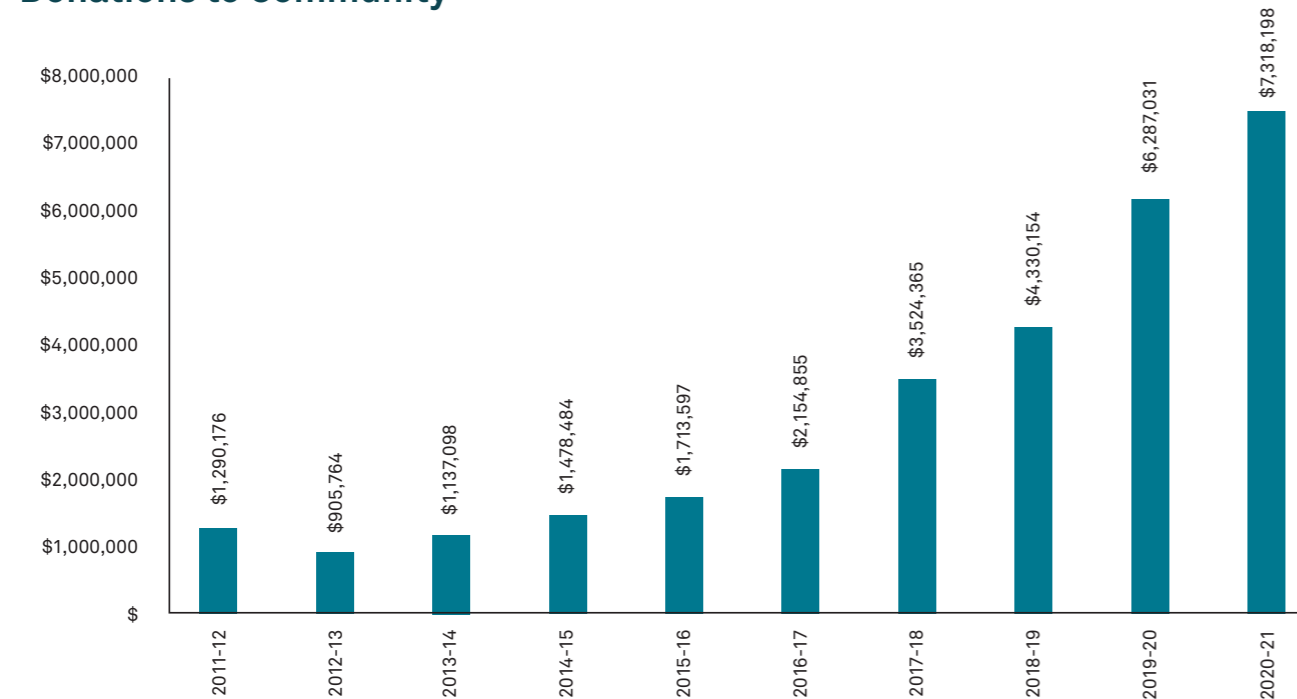
Our Financials

The Foundation’s corpus finished June 2021 at \$144 million after donations to the community of \$7.3 million for the year plus a donation to Canberra Grammar School of \$3.8 million. The corpus growth is the result of ongoing contributions from the Snow family as well as returns on investments. Both the corpus and annual donations are forecast to continue to grow into 2022.

Corpus Growth



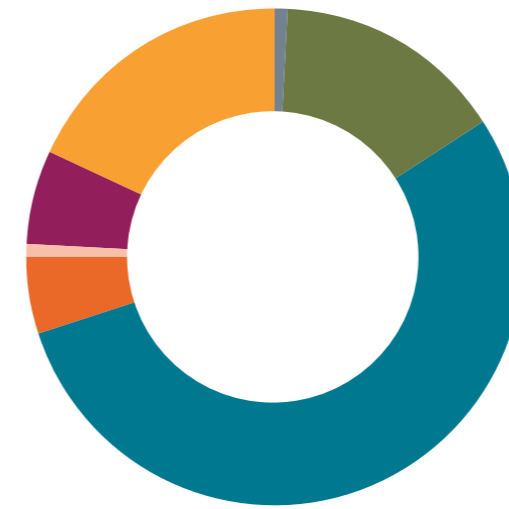
Donations to Community*



*excludes donations to Canberra Grammar School

Investment Strategy

Our investment strategy is to ensure a strong rate of return to fund the foundation’s grant-making programs over the long term, with a target-balanced asset portfolio skewed towards Australian shares with fully franked yields offering additional returns without risk. We invest responsibly in corporations who reflect our mission with preference given to members of ESG Research Australia and signatories to the United Nations PRI and we avoid those whose activities conflict.



Asset Allocation – June 2021

- 1% Other Investments
- 15% Cash and Term Deposits
- 54% Australian Equity Funds
- 5% Hybrids
- 1% Fixed Interest
- 6% Social Impact Investments
- 18% Global Equity Funds

Note

Australian Equity Fund Managers

Future Generation Investment Company,
 Third Link Growth Fund
 Hyperion Australian Growth Companies Fund
 Maple-Brown Abbott,
 Warakirri Equities Trust,
 Warakirri Cash Trust,
 Australian Foundation Investment Company,
 BKI Investment Company,
 Russell Investments Australia Responsible Investments,
 Milton Corporation

Social Impact investments

Twenty-eight social impact investments as detailed over the page.

Global Equity Fund Managers

Hyperion Global Growth Companies Fund,
 Platinum International,
 Future Generation Global Fund

Social Impact Investments

We are committed to driving social impact by giving to great organisations and by investing our corpus responsibly and growing our social impact investment portfolio. We continue to aim for 10% invested in pure Social Impact Investments. Currently, the foundation has twenty-eight Social Impact Investments totalling \$8.1M (6% of our portfolio).

Additionally, the Fund Managers Third Link, Future Generation Investment Company (FGX) and Future Generation Global Fund (FGG) have been selected due to their philanthropic and charitable nature. If these managers were included within our impact investments, the percentage share of impact investments would increase to **28%** of our portfolio (refer June 2021 graph).

Due to our large investment in Future Generation's FGG and FGX, The Snow Foundation was given the opportunity to nominate charities to donate our earned investment income this year. We selected the following (\$181,008 total in donations): The Violet Initiative, UNSW – Uluru Statement from the Heart, AbilityMade (via Northcott), Tender Funerals, Canberra PCYC, Beryl Women, HOME in Queanbeyan, The Reconnect Project, Liverpool Neighbourhood Connection, Refugees Advice and Casework Service, Project Youth, RHD Australia, Sober in the Country, Imagine More, St Johns Care and The Run for Good Project.

New Impact Investments in 2020/21

The Conscious Investment Management Impact Fund \$500k - renewable energy, disability accommodation, seniors housing, affordable housing, coaching to unemployed.

Jigsaw \$250k - disability training and employment.

Melior \$300k - (further investment) invests in companies creating net positive impact in line with UN Sustainable Development Goals.

Existing Impact Investments from 2015-2020

Australian Unity Disability Housing \$1M - Disability accommodation.

Melior \$500k - Invests in companies creating net positive impact in line with UN Sustainable Development Goals.

Synergis Fund \$500k - disability accommodation.

Seer Data Analytics \$50k - data platform for the community sector.

Loop + \$235k - solutions for the care management of pressure injuries in wheelchair users.

Xceptional BOLD \$100k - employment for people with Autism Spectrum Disorder.

Community Loans totalling \$35k - Includes: Lady Torpedo Productions, Universal Village International, Centre for Participation, GPS Rowing Club.

AbilityMade \$350k - custom made 3D printed ankle-foot orthoses for children.

Patamar II \$750k - partially drawn, international fund: low-income communities, companies in agriculture, e-commerce, health-care, financial.

CSIRO \$500k - partially drawn, invests in technology and science ventures with potential to disrupt generating social and environmental impact.

CSL Limited \$200k - global biotechnology company - researches, develops, manufactures, and markets products to treat/prevent human medical conditions.

ResMed Inc \$100k - medical equipment company specialising in treatment of sleep-related breathing disorders.

Cochlear \$200k - medical device company - designs, manufactures, supplies the Nucleus cochlear implant, the Hybrid electro-acoustic implant and the Baha bone conduction implant.

Murray Darling Basin Balanced Water Fund \$1M - environmental watering in wetlands of spiritual and cultural significance to First Nations People.

SEFA Loan Fund \$300k - affordable housing, Indigenous training/employment, refugee services.

Project Independence \$100k - undrawn, disability housing model for homeownership.

Social Ventures Australia Fund \$950k - partially drawn, invests in impact impact: housing projects, education, employment, First Nations, disability, health.

Giant Leap Fund \$250k - partially drawn, invests in companies whose mission is to create a sustainable society.

Compass SIB \$300k - housing and support to young people exiting out of home care.

Case Studies From Our Social Impact Investments



Jigsaw

Jigsaw is a social enterprise that provides training and employment for people with a disability. Trainees get on-the-job experience in data and document management fulfilling corporate contracts.

Despite challenges with COVID, Jigsaw opened new hubs in Melbourne and Adelaide, adding to existing hubs in Sydney and Brisbane.

Across these hubs, Jigsaw has provided 685 traineeships and employed 100 in award-wage jobs.

In 2021, we provided an impact investment of \$250k to assist with Jigsaw's national expansion, and a grant of \$50kp.a. for three years to develop a service to place job-ready candidates into mainstream employment.

We are very excited to be on this growth journey with Jigsaw to provide more people with a disability the opportunity of securing and keeping a job.

Jigsaw Brisbane trainee Alex (above) shared his story about the immense impact of being a trainee at Jigsaw enabling him to build his skills and gain confidence in the workforce. He even made a presentation to 150 people! Alex has a dream of working at JB Hi-Fi and we'll support him every step of the way.

Australian Unity – Disability Accommodation Fund

The Specialist Disability Accommodation Fund is a wholesale fund that focuses on investing in high-quality Specialist Disability Accommodation (SDA) in attractive locations to support Australians living with a disability.

The Fund acquires and develops market leading Specialist Disability properties for occupation by National Disability Insurance Scheme Participants.

Danielle* has been living in a privately rented apartment in QLD for 10 years and was diagnosed with degenerative neurological disorder five years ago. Her illness has progressed to a stage where she needs a wheelchair and is confined to one part of her home.

As her condition declines, Danielle will be relying more and more on formal support to undertake daily living which she says is 'stripping her of independence and dignity bit by bit'.

Being approved for Specialist Disability housing has been a huge relief and she looks forward to transitioning into her new unit in the ACT, through Vera Living.

The accessible features of her unit allow her to remain independent for most tasks - cooking, showering and accessing the community with Parc in Macquarie located just across the road from a local shopping complex. Independently, she can shop, attend medical appointments or catch up socially.

Danielle has chosen to move to the ACT to be closer to her loving family and has played an active part in the ACT project from the very beginning. Vera Living said "It has been remarkable to work alongside Danielle and her family to see her move to a suitable and supportive home environment which allows for her to remain independent and active into the future."



Grant Summary 2020/21

Our Place – Canberra Region

	Who benefits	What funding is for	FY21	Years#
Economic Justice and Safety				
Barnardos - Sport	Disadvantaged young people	Participation in sport	\$5,000	26
Canberra Community Law	People on low income	Legal and social work	\$20,000	11
Canberra High School Breakfast Club Program	Students	Breakfast club	\$1,800	10
Care Financial Services	People on low income	Low interest loans	\$20,000	6
CBR Innovation Network	Homeless young people	Program facilitation	\$48,500	1
CREATE Foundation	Children in out-of-home care	Connection program for siblings in out-of-home care	\$15,000	6
HOME in Queanbeyan	People with a mental illness	Core funding	\$15,000	15
Karinya House Home for Mothers & Babies	Single mothers	Case worker to support pregnant and parenting mothers	\$45,000	14
My Coaching My Future	Domestic abuse survivors	Support for women leaving violent relationships	\$8,000	3
OzHarvest - Canberra	Community	Food program	\$10,000	5
Quest for Life	Domestic abuse survivors	Trauma workshops	\$20,000	4
Raw Potential (Youthcare)	Disengaged youth	Youth worker	\$50,000	27
Rotary Club - Ruby's Place	Youth homelessness	Renovations	\$25,000	3
Roundabout Canberra	Families	Essential items for families experiencing hardship	\$25,000	3
Salvation Army	Disadvantaged	Dental program	\$15,000	21
SCENE	At risk/disadvantaged	Equipment/facilities	\$3,306	1
St John's Care	At risk/disadvantaged	Food program	\$40,000	28
Stasia Dabrowski - Soup Kitchen	At risk/disadvantaged	Soup kitchen	\$6,000	18
VOCAL Act	Community	Support for victims of crime	\$5,000	6
YWCA Canberra - Rentwell	People on low income	Affordable housing	\$100,000	3
Zonta Club	Domestic violence/abuse	Equipment/facilities	\$6,000	1
Total			\$483,606	
Education/ Employment				
Australian Indigenous Mentoring Experience	Indigenous students	Student mentoring	\$60,000	10
Barnardos Australia - Queanbeyan	Indigenous students	After school care	\$30,000	3
Beacon Foundation	Students	Employment skills	\$20,000	3
Capital Region Community Service	Young people	Employment skills	\$20,000	11
CC Cares at Canberra College	Young people	Employment skills program for young parents	\$25,000	4
Companion House - Program	Refugees	Scholarships	\$14,000	8
Parentline ACT	Community	Training for volunteer counsellors	\$15,000	3
Queanbeyan High School	Students	Scholarships for tertiary education	\$13,000	16
The Pinnacle Foundation	LGBTIQ+	Scholarships	\$15,000	8
UnitingCare Kippax - Mower Shed	At risk/disadvantaged	Social enterprise - employment	\$40,000	4
Woden Community Service Inc	Refugees	English classes	\$3,000	4
YWCA - She Leads	Young women	Scholarships	\$13,000	1
YWCA Computer Club - Richardson Primary School	Students	Program co-ordinator	\$20,000	9
Canberra PCYC - Mower Shed Southside	At risk/disadvantaged	Social enterprise - employment	\$13,545	1
Total			\$301,545	

	Who benefits	What funding is for	FY21	Years#
Health				
Cancer Council ACT - Wigs	People with cancer	Wig service for people with cancer	\$5,000	19
Clare Holland House (Calvary Health Care)	Palliative care	Expansion of current facilities - new wing	\$1,000,000	2
Clown Doctors	Sick children in hospital	Relief for sick children in hospital	\$10,000	8
Kookaburra Kids	Young people	Support for children with a parent suffering from mental health issues	\$20,000	4
Menslink	At risk male youth	Silence is Deadly - mental health awareness for young men	\$50,000	7
Mental Illness Education ACT - MIEACT	Community	Mental health awareness	\$15,000	6
Music For Canberra	People with a disability	Group music activities	\$10,000	12
Neighbourhood Centre	Aging/elderly	Core	\$15,000	2
Palliative Care ACT - Lifestory	Palliative care	Stories of patients in palliative care	\$10,000	2
Pegasus - Riding for the Disabled (ACT)	Disability	Equipment/facilities	\$14,901	5
Project Independence	People with a disability	Operations	\$46,000	8
Rotary Gungahlin - PowerChairs	People with a disability	Equipment	\$15,000	1
Tender Funerals	End-of-Life	Operations	\$55,000	2
The Farm in Galong	Women with addictions	Facilities, renovations	\$105,000	4
Volunteering ACT - Connections Program	People with a mental illness	Mentoring and support	\$25,000	2
YMCA Canberra - RAID	People with a disability	Basketball program	\$4,545	16
Total			\$1,400,446	
Canberra Total			\$2,185,597	

Our Place – Key Regions

	Who benefits	What funding is for	FY21	Years#
Sydney				
HammondCare Foundation	Homeless	Construction of new home for elderly and homeless	\$250,000	4
Sydney Women's Fund / Sydney Community Foundation**	Women/families	Core funding and grants for women and families	\$200,000	7
Total			\$450,000	
NSW South Coast, Rural and Regional areas				
Community Life at Bateman's Bay	Disadvantaged men	Case worker to support men at risk	\$30,000	8
Country Education Foundation of Australia	At risk/disadvantaged	Scholarships	\$100,000	15
Eurobodalla Education & Therapy Services (Muddy Puddles)	People with a disability	Core funding	\$20,000	6
Foundation for Rural & Regional Renewal (South Coast) *	Community	Investing in Rural Communities Futures program - NSW South Coast	\$345,500	6
Jindelara Disability Service	People with a disability	Core funding	\$15,000	3
Royal Agricultural Society (NSW) Foundation	Young people	Scholarships	\$100,000	13
Ulladulla High School	Young People	Wellbeing Officer	\$45,000	6
Total			\$655,500	
Key Regions Total			\$1,105,500	
Total Our Place			\$3,291,098	

#Number of years of support. Includes future agreements.

Our Country

	Who benefits	What funding is for	FY21	Years#
Social Justice Issues				
ACOSS (Raise the Rate)	At risk/disadvantaged	Advocacy to increase welfare payments	\$50,000	3
Equality Australia	LGBTIQ+	Advocacy for LGBTIQ+ rights	\$200,000	4
One Disease	Indigenous communities	Elimination of crusted scabies	\$500,000	11
Orange Sky Australia - NT	Indigenous communities	Seed funding for hygiene services, Maningrida NT	\$100,000	3
Pride Foundation	LGBTIQ+	Advocacy	\$10,000	3
Rheumatic Heart Disease - Deadly Heart Trek	Indigenous communities	Community engagement, awareness, education, plus early diagnosis and treatment of RHD	\$20,145	2
Rheumatic Heart Disease - Research	Indigenous communities	Research into Strep A vaccine	\$100,000	8
Rheumatic Heart Disease - Take Heart: Advocacy Education	Indigenous communities	Advocacy and community education resources	\$120,450	8
UNSW – Uluru Statement from the Heart	Indigenous communities	Uluru Statement from the Heart reforms, engagement of First Nations	\$50,000	3
Total			\$1,150,595	
Awareness of Social Issues				
Better Renting	Renters	Awareness and advocacy for renters rights	\$25,000	4
Documentary Australia Foundation - The Dreamlife of Georgie Stone	Community	Documentary about the experience of a trans young person	\$15,000	1
Documentary Australia Foundation - Incarceration Nation	Community	Documentary about the overrepresentation of Indigenous people in prisons	\$50,000	1
Documentary Australia Foundation - Unbreakable	Community	Documentary about Jelena Dokic and abuse in sport	\$50,000	1
Total			\$140,000	
Social Entrepreneurs and Innovation				
AbilityMade	People with a disability	Three dimensional printed orthoses	\$50,000	1
Bus Stop Films	People with a disability	Social inclusion, training and employment	\$33,333	4
Getaboutable	People with a disability	Website for accessible travel	\$15,000	4
Good360	At risk/disadvantaged	Core funding to distribute new goods to community organisations	\$125,000	10
Global Sisters	Marginalised women	Pathways to self-employment for women	\$155,600	12
Sober in the Country	People with alcohol addiction	Core funding to provide peer support in rural and regional areas	\$75,000	3
UMBO	People with a disability	Seed funding for online speech therapy services	\$20,000	2
Uplifting Australia	Community	Mental health prevention program for families	\$50,000	7
The Violet Initiative	Carers and elderly	Core funding to improve end-of-life experiences	\$300,000	11
Jigsaw	People with a disability	Jigsaw Connect: facilitating mainstream employment	\$50,000	3
The Funding Network - LGBTIQ+ Domestic Violence Awareness Foundation	LGBTIQ+	Domestic violence awareness day	\$2,500	1
The Funding Network - Rainbow Families	LGBTIQ+	Support for LGBTIQ+ families	\$5,000	1
The Funding Network - Everybody's Home Campaign	Homeless	Advocacy	\$2,500	1
Vanguard Laundry Services	Mental Health	Core funding	\$25,000	1
Total			\$908,933	
Total Our Country			\$2,199,528	

Our Sector

	Who benefits	What funding is for	FY21	Years#
Documentary Australia Foundation	Community	Core funding	\$25,000	7
Griffith University - Yunus Centre	Community	Social Enterprise National Strategy	\$15,000	1
Hands Across Canberra	Community	Core funding	\$50,000	11
Hands Across Canberra - Vital Signs	Community	Research	\$25,000	2
Mannifera	Community	Collective grant pool and core funding	\$50,000	3
Palliative Care Australia	Carers	KPMG report into palliative care spending in Australia	\$20,000	1
Social Impact Hub	For-purpose organisations	Reimagine Impact - training for for-purpose leaders	\$30,000	2
Together 4 Youth Collective - Raise Foundation	At risk/disadvantaged	Seed funding to develop collaborative youth support model	\$50,000	1
Total			\$265,000	

Our Family

	Who benefits	What funding is for	FY21	Years#
Cape York Institute - From the Heart	Indigenous	Uluru Statement from the Heart	\$20,000	1
Igniting Change	Community	Core funding	\$25,000	2
Kulture Break	At risk/disadvantaged	Empowering young people through performing arts and leadership development	\$15,000	1
Macquarie University Centre for MND Research	Motor Neuron Disease	Medical research	\$235,000	11
Multilit	At risk/disadvantaged	effective literacy instruction	\$25,050	1
St Vincent's Curran Foundation	Sick	Assistance for children with heart and lung conditions	\$12,000	5
Studio A	People with a disability	Professional development for artists with an intellectual disability	\$25,000	1
Tick-Borne Disease Project - NORTH Foundation	Sick	Research at Royal North Shore Hospital	\$1,044,000	2
Top Blokes Foundation	Young men	Mentoring for young men	\$20,000	2
UNSW – Uluru Statement from the Heart	Indigenous	Advocacy	\$20,000	2
Women for Election	Women/girls	Core funding	\$10,000	2
Other	Community	Donations	\$79	2
Total			\$1,451,129	

Individuals

Total	\$111,442
--------------	------------------

Total Donations

\$7,318,198

#Number of years of support. Includes future agreements.

Notes from page 31

***FRRR recipients** - Nowra, Cullunghutti Aboriginal Child and Family Centre Aboriginal Corporation, Nowra Sub-Branch of the Returned and Services League of Australia, Shoalhaven Community Preschool Inc, Shoalhaven Health and Arts Inc, South Coast Beef Producers Association Inc, Nowra Community Food Store, South Coast Women's Health & Welfare Aboriginal Corporation, Ulladulla, Independence Ulladulla, Milton Ulladulla Business Chamber Incorporated, Noahs Ark Centre of Shoalhaven Inc, Safe Waters Community Care Inc, Bawley Point and Kioloa Community Association. Batemans Bay The Circle Foundation Cooperative Ltd, Clyde River and Batemans Bay Historical Society Inc, Eurobodalla Education and Therapy Services, Eurobodalla Woodcraft Guild Incorporated, The Family Place Inc, Southcoast Health and Sustainability Alliance, Batemans Bay Connections

**** Sydney Women's Fund recipients:** Assisting women recovering from domestic/family violence Orana Women's Health and Domestic Violence Service, Bonnie's Support Services, Strong Mothers, Women and Girls Emergency (WAGEC) Youth Education, RISE - Whitelion, Junior RISE – Save the Children (Campbelltown region) Employment Program, Liverpool Neighbourhood Connections Social Enterprise Employment Scholarships Be Kind Sydney COVID-19 Quick Response Appeal

Values

Humility

We recognise the expertise of our partners and help them achieve great things

Social Justice

We uphold principles of equity, inclusiveness and fairness

Commitment

We are here for the long term and understand social change takes time

Collaboration

We are engaged with our partners and our community and work together supportively

Empathy


We strive to understand and share the feelings of others


Transparency

We share our learnings and promote shared intelligence



The Snow Foundation

 02 6175 3333

 enquiries@snowfoundation.org.au

 facebook.com/thesnowfoundation

 twitter.com/georgina_byron

 linkedin.com/company/the-snow-foundation

snowfoundation.org.au

